

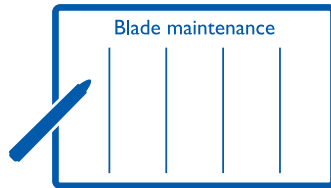
Bandsaw blades

The world's finest new generation bandsaw blade

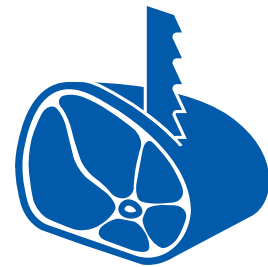
At MunkforsSågar, Bandsaw Blades are our speciality and we have over 70 years of manufacturing experience within the meat industry. We produce Bandsaw Blades of the highest quality. Each Bandsaw Blade is a precision tool. To maintain maximum function - you should follow a few simple maintenance rules.



Keep drive-wheels clean and check Bandsaw Blade scrapers regularly as a precautionary safety measure.



Develop a fixed schedule for inspecting, cleaning and maintaining your sawing equipment.



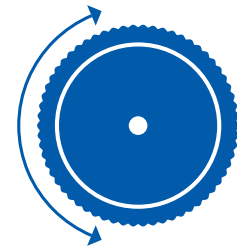
Always cut straight through the meat and never twist the Bandsaw Blade when operating. Do not push but let the Bandsaw Blade work itself through the meat with light pressure.



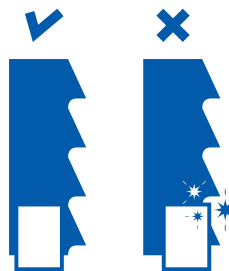
Make sure the Bandsaw Blades are correctly fitted. Check and if necessary adjust blade guides. The blade should run in a straight line through the guide slot and not be forced in any direction.



Always use correct blade tension. Do not let it sway during operation. Excessive tension may cause the blade to break.



Adjust the back rests to give the Bandsaw Blade support only when operating.



Never let the Bandsaw Blade scrapers come in contact with the saw teeth.

*Following the guidelines is essential for high user safety.
In addition, the final product will have high quality, improved colour retention and shelf life.*